



**DAPP DURA SERIES POLYCARBONATE &
FRP SHEET & PANEL SYSTEM
MANUFACTURER &
TURNKEY SERVICE SOLUTION PROVIDER**

Durable | Versatile | Non-corrosive

Scan to Visit Website



COMPANY INTRODUCTION



Panthor Turnkey Projects Pvt Ltd, founded in 2018, excels in civil construction, dairy machinery, and oil and gas services. Led by Dilip Prajapati and Pravin Prajapati, they deliver industrial projects and specialised machinery installations. Their oil and gas division offers manpower, operations, maintenance, and equipment rentals. Through their DAPP Dura brand, Panthor provides high-quality polycarbonate and FRP products globally in partnership with Japanese & Chinese manufacturers. Connect with us : panthorturnkey.com.

STRATEGIC PARTNER'S DETAIL

Panthor Turnkey Projects Private Limited have established strategic Partnership with Hebei Kunyan Building Materials Science Technologies Co. Ltd which was founded in 2003.



VISION

To become the global benchmark in turnkey engineering and thermoplastic roofing systems—delivering innovative, sustainable, and high-performance solutions that transform spaces and empower industries worldwide.



**A WORLD OF
SOLUTIONS**



ONE-STOP SHOP



**PROFESSIONAL
PROGRESS
& INNOVATION**



**LONG-STANDING
REPUTATION &
GLOBAL PRESENCE**

HIGH-PERFORMANCE ROOFING & PANEL SYSTEMS

Panthor Turnkey provides high-performance corrugated, flat, and multiwall sheets, along with robust polycarbonate panel systems. Supported by a full range of accessories, our solutions offer strength, clarity, and easy installation for diverse applications.

- ✓ Corrugated Sheet
- ✓ Flat Sheet/ Strong Sheet
- ✓ Multiwall Sheets
- ✓ Strong Polycarbonate Panel System
- ✓ Accessories
- ✓ FRP Sheets

OTHER SERVICES

- ✓ Polycarbonate & FRP Sales, Service & Support
- ✓ Civil Engineering Services
- ✓ Mechanical Engineering Support Services
- ✓ Oil & Gas Services
- ✓ Consultancy & Business Support Services

OUR PRODUCTS

CORRUGATED POLYCARBONATE SHEET

DAPP DURA-ROOF (Condensation Control High Impact Corrugated Polycarbonate Sheet)



The DAPP Dura-Roof Condensation Control corrugated polycarbonate sheet features a built-in hydrophilic (anti-drip) coating that disperses moisture into a thin film, eliminating light-blocking droplets and maintaining optimum light transmission under humid or temperature-different conditions. Constructed from high-impact polycarbonate resin, it offers outstanding durability with resistance to hail, debris, and impact while blocking over 99% of UV rays via a co-extruded UV layer.

Applications

It is ideally suited for greenhouse roofs, side walls, and partitions where condensation control is critical to prevent crop diseases while maximizing photosynthetically active radiation (PAR) for plant growth. Additionally, it works well in conditioned enclosed structures such as pool enclosures, skylights, patios, canopies, and garden centers that benefit from high light transmission and moisture management.

Main Characteristics

- ✓ High Impact Strength
- ✓ Condensation Control (Anti-drip)
- ✓ UV Protection
- ✓ Lightweight & Easy to Install
- ✓ Weather & Fire Resistance
- ✓ Noise Reduction
- ✓ Long Life Span

DAPP DURA-ROOF PRO (High Impact Embossed Corrugated Polycarbonate Sheet)



DAPP Dura-Roof Pro is a corrugated, embossed polycarbonate roofing sheet with a diamond-textured surface that delivers high light transmittance alongside exceptional impact resistance. It features a co-extruded UV coating blocking over 99% of ultraviolet rays and is made from virtually unbreakable Makrolon/ Lexan resin, achieving a lifespan of over 10 years even in hail, heavy rain, snow, and sandstorms. Lightweight and flame-retardant, it's designed to resist warping, reduce rain noise, and install easily with minimal framework.

Applications

It's well-suited for roofing structures including workshops, greenhouses, patios, carports, awnings, curtain walls, and garden sheds, especially where a balance of daylighting, durability, and aesthetic appeal is desired. Its embossed texture also provides diffused lighting ideal for signage, skylights, and canopy installations in both residential and commercial architectural use cases.

Main Characteristics

- ✓ Less Warping, Hail & Impact Resistant
- ✓ UV Coated Protection
- ✓ Weather Resistance & Wide Service Temperature Range
- ✓ Balance Shade & Daylight
- ✓ Less Leakage
- ✓ Superior Strength & Long Lifespan
- ✓ Lightweight, Easy to Install
- ✓ Flame Retardant
- ✓ Improved Absorption of Rain Noise



15 YEARS WARRANTY

OUR PRODUCTS

FLAT/SOLID POLYCARBONATE SHEETS

DAPP DURA-SUN (Flat Solid Polycarbonate)



DAPP Dura–Sun solid polycarbonate sheets offer superior impact resistance, being 200 times stronger yet half the weight of glass, with up to 92% light transmission. They are ideal for architectural glazing, roofing, skylights, safety glazing, and thermoformed lighting fixtures due to their clarity, durability, and ease of bending or cutting. Available in various thicknesses, colours, and finishes, these sheets provide UV protection with a 10-year warranty, ensuring long-lasting performance.

Applications

These polycarbonate sheets are perfect for structural and decorative applications such as noise barriers, carports, commercial and architectural roofing, curtain walls, glazing, partitions, signage, and displays due to their clarity, durability, and design flexibility.

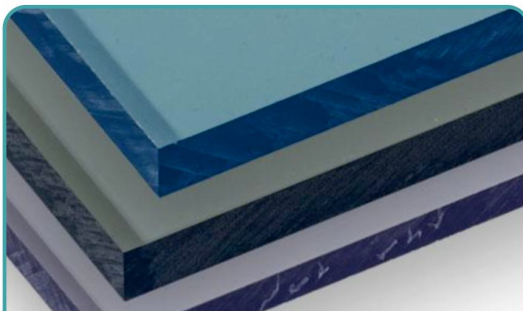


YEARS WARRANTY

Main Characteristics

- ✓ Hail & Impact Resistant
- ✓ UV Coated Protected
- ✓ Balance Shade & Daylight
- ✓ Weather Resistant & Wide Service Temperature Range & Flame Retardant
- ✓ Lightweight, Easy to Install
- ✓ High Optical Clarity & Easy to Clean
- ✓ Superior Strength & Improved Absorption of Noise

OTHER PRODUCTS



**DAPP DURA-GUARD (ABRASION
RESISTANT POLYCARBONATE)**



**DAPP DURA-SHIELD (BALLISTIC-
GRADE CLEAR POLYCARBONATE SHEETS)**



**DAPP DURA-FROST (FROSTED
POLYCARBONATE SHEET)**

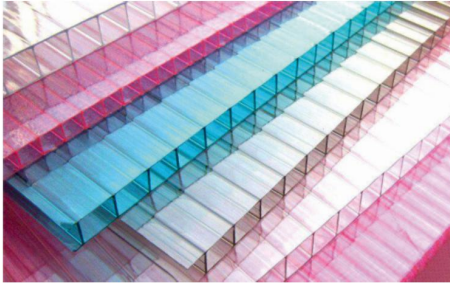


**DAPP DURA-GLAZE DIAMOND (DIAMOND
EMBOSSED FLAT POLYCARBONATE SHEET)**

OUR PRODUCTS

MULTIWALL POLYCARBONATE SHEET

DAPP DURA-LITE (Multiwall Polycarbonate)



The DAPP Dura-Lite Multiwall or Twin Wall Hollow Polycarbonate Sheet is a lightweight, rigid, impact-resistant sheet with superior thermal and sound insulation, offering 50-70% better insulation than glass. It is ideal for home awnings, pergolas, roofing, skylights, canopies, and greenhouses, lasting 15-20 years while blocking 99.9% of UV rays. Available in various gauges and Solar-Smart tints, it maximises daylighting while reducing solar heat gain for energy-efficient use.

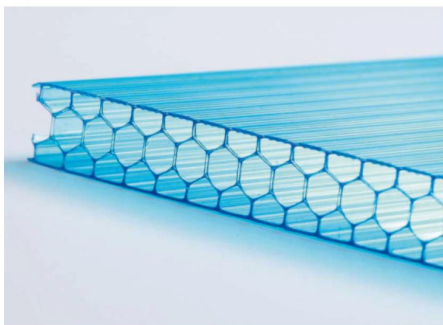
Applications

These panels are used in diverse architectural applications such as skylights, sidelights, barrel vaults, coloured walkways, canopies, and building cladding to enhance daylighting and aesthetics. They also serve specialised purposes in greenhouses, transport pool enclosures, stadium roofing, and illuminated outdoor decorative structures.

Main Characteristics

- ✓ Excellent Impact Strength
- ✓ UV Coated Protected
- ✓ High Light Transmission
- ✓ Lightweight, Easy to Install
- ✓ High Thermal Insulation
- ✓ High Structural Strength
- ✓ Balance Shade & Daylight

DAPP DURA-HONEYCOMB (Multi layered Honey Comb Polycarbonate)



DAPP Dura-Honeycomb Roofing Panels are multi-layered honeycomb polycarbonate sheets with superior thermal insulation, high impact strength, and stable deformation resistance compared to twin wall polycarbonate. Their special structure enables them to withstand strong winds, heavy snow loads, and harsh weather while maintaining 50-70% transparency for artistic and privacy applications. They are ideal for building cladding, greenhouse covers, industrial glazing roofs, and skylights.

Applications

It's well-suited for roofing structures including workshops, greenhouses, patios, carports, awnings, curtain walls, and garden sheds, especially where a balance of daylighting, durability, and aesthetic appeal is desired. Its embossed texture also provides diffused lighting ideal for signage, skylights, and canopy installations in both residential and commercial architectural use cases.

Main Characteristics

- ✓ Walkway Shed
- ✓ Anti Condensation Greenhouse
- ✓ Building Cladding
- ✓ Factory Warehouse Roof
- ✓ Green House
- ✓ Indoor Decoration Partition
- ✓ Residential Skylight
- ✓ Roofing Solution
- ✓ Stadium Sports Venues



YEARS WARRANTY

OUR PRODUCTS

FRP SHEET

DAPP FRP (High Impact Corrugated FRP Sheet)



DAPP FRP Sheets are flexible thermoplastic materials with a unique waved surface, suitable for roofing, cladding, skylights, facades, greenhouses, and outdoor DIY projects. Panthor Turnkey Projects Private Limited, under the DAPP FRP Products brand, is a leading turnkey provider in India with extensive industry expertise. They offer various FRP sheet profiles and colours compatible with standard metal profiles, ideal for contractors and DIY users alike.

Applications

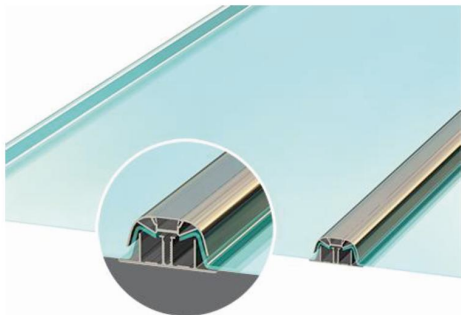
These FRP sheets are used for plant and warehouse roofing, industrial daylight systems, wide span canopies, and protective overbridge walls. They also serve as wall panels in chemical, pharmaceutical, and dairy plants, cladding for food storage, agricultural roofing, residential canopies and sheds, and decorative coloured roofing.

Main Characteristics

- ✓ Excellent Impact Resistance
- ✓ UV Coated Protected
- ✓ Weather Resistant & Wide Service Temperature Range
- ✓ Lightweight, Easy to Install
- ✓ Minimum Maintenance
- ✓ Long Lifespan

POLYCARBONATE PANEL SYSTEM

DAPP DURA-GLAZE (Solid Polycarbonate Architectural System)



DAPP Dura-Glaze is a standing seam polycarbonate glazing system ideal for architectural, home improvement, and DIY projects. It combines panels, aluminium profiles, and fasteners into a leak-proof solution that supports wide spans and heavy-duty engineering needs. Suitable for pitched roofs, skylights, clear span roofs, and commercial curtain walls, it offers a durable, low-maintenance alternative to traditional glass roofing with strong performance and lasting reliability.

Applications

This system is ideal for outdoor roofing and commercial area skylights. It suits covered walkways, awnings, canopies, curtain walls, and curved sidelights. It's also perfect for domestic pergolas, playground coverings, and gazebo replacement panels.

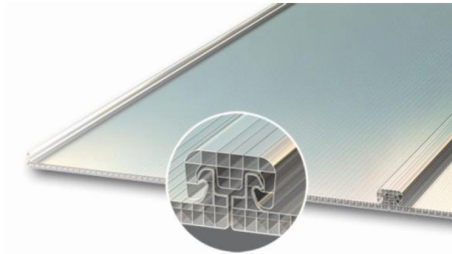
Main Characteristics

- ✓ Glass Appearance
- ✓ Leak Proof
- ✓ Balance Shading
- ✓ Fast & Safe Installation
- ✓ Minimal Maintenance
- ✓ Heavy Duty
- ✓ Gaskets & Sealants Free

OUR PRODUCTS

POLYCARBONATE PANEL SYSTEM

DAPP DURA-LITE GLAZE (Multiwall Polycarbonate Architectural System)



The DAPP Dura-Glaze system is ideal for outdoor roofing. It is perfect for commercial area skylights. It suits covered walkways, offering reliable protection. It provides durable solutions for awnings and canopies. The system is also great for curtain walls and curved sidelights. It works well for domestic pergolas and playground coverings. Additionally, it's suitable for gazebo replacement panels.

Applications

This system is ideal for playground coverings, gazebo replacement panels, and outdoor roofing. It also suits commercial area skylights, covered walkways, awnings, and canopies. Additionally, it works well for curtain walls, curved sidelights, and domestic pergolas.

Main Characteristics

- ✓ Gaskets & Sealants Free
- ✓ Glass Appearance
- ✓ Leak Proof
- ✓ Balance Shading
- ✓ Fast & Safe Installation
- ✓ Minimal Maintenance
- ✓ Heavy Duty

EV CHARGING STATION



PTPPL powers India's EV revolution with DAPP Dura series polycarbonate charging station shelters, designed for durability and sustainability.

Built with advanced technologies and a transparent, weather-resistant design, these structures enhance user safety and accessibility for commercial and public spaces. Our innovative solution supports India's green energy goals and EV infrastructure growth.

Applications

- ✓ **Durability:** Solid polycarbonate sheets resist harsh weather and wear.
- ✓ **Safety:** UV-resistant design protects users and equipment.
- ✓ **Aesthetic Appeal:** Sleek, transparent look complements modern spaces.
- ✓ **Sustainability:** Eco-friendly materials align with green initiatives.
- ✓ **Weather Protection:** Shields charging units and users from rain or sun.
- ✓ **Low Maintenance:** Reduces upkeep costs for long-term use.

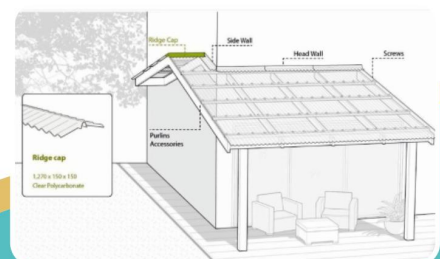
Key Highlights

- ✓ **Innovation:** Solid polycarbonate sheets offer strength, clarity, and resilience.
- ✓ **Impact:** Supports thousands of EV users, boosting adoption.
- ✓ **Government Fit:** Aligns with India's EV and renewable energy policies.
- ✓ **Global Quality:** Backed by global technology partnerships for excellence.

DAPP DURA-FIX ACCESSORIES

Main Characteristics

- ✓ Head Wall Accessories
- ✓ Aluminium Installation Accessories
- ✓ Screws
- ✓ Ridge Cap Accessories
- ✓ Aluminium Section for Installation
- ✓ Side Wall Accessories
- ✓ Steel Structure for Installation



OUR PROJECTS

PROPOSED PROJECT FOR GROWING INDIAN MARKETS

HIGHWAY NOISE BARRIER / ACOUSTIC BARRIER / OVERBRIDGE PROTECTION WALL / HIGHWAY SAFETY WALL WITH BEAUTIFICATION



PTPPL is poised to Transform India's Highway & Infrastructure with DAPP Dura Series Polycarbonate Sheets by providing solutions like Noise/Acoustic Barrier and Safety Walls, Reducing Noise Pollution by 35% while enhancing over bridge protection. Crafted with Advanced Technologies and a Japanese/Chinese Inspired Design, these durable, transparent solution meet MoRTH standard, ideal for Indian Road & Infrastructure, Over Bridge on Highway and Urban corridors, our innovative approach ensures safer, quitter communities.

Benefits

- ✓ **Noise Reduction:** Cuts traffic noise by up to 35%, improving community well-being.
- ✓ **Safety Enhancement:** Robust solid PC sheets provide over bridge and highway protection against fall-down vehicles During harsh accidents.
- ✓ **Aesthetic Integration:** Transparent design blends seamlessly with urban landscapes.
- ✓ **Weather Resistance:** Withstands harsh climates with minimal maintenance.
- ✓ **Regulatory Compliance:** Meets MoRTH and pollution board standards for sustainable infrastructure.
- ✓ **Animal Barrier:** Prevents sudden entry of animals (e.g., cows, dogs) and obstacles, enhancing road safety.

Key Highlights

- ✓ **Innovation:** Solid polycarbonate sheets offer unmatched strength, clarity, and UV resistance.
- ✓ **Impact:** Enhances safety and reduces noise for 10,000+ daily commuters, protecting against animal intrusions.
- ✓ **Government Fit:** Aligns with GSRDC's infrastructure goals, pollution control, and accident prevention mandates.
- ✓ **Global Quality:** Backed by global technology partnerships for world-class performance.

POLYCARBONATE BUS PORT / BUS SHELTER



PTPPL envisions elevating India's public transport with DAPP Dura Series polycarbonate bus ports and shelters, offering durable, transparent waiting areas with modern appeal. Crafted with advanced technologies and a Japanese/Chines-inspired design, these shelters meet BIS standards and support smart city initiatives. Ideal for Modern Cities, our innovative solution ensures commuter comfort and safety.

Benefits

- ✓ **Durability:** Solid polycarbonate sheets withstand harsh weather, ensuring long-lasting performance.
- ✓ **Safety:** Provides secure waiting areas with UV resistance and impact protection.
- ✓ **Aesthetic Appeal:** Transparent, sleek design enhances urban and tourism landscapes.
- ✓ **Sustainability:** Eco-friendly materials support green infrastructure goals.
- ✓ **Cost-Efficiency:** Lightweight, modular construction reduces installation and maintenance costs.
- ✓ **Accessibility:** Spacious design accommodates high commuter volumes with ease.

Key Highlights

- ✓ **Innovation:** Solid polycarbonate sheets deliver strength, clarity, and weather resistance.
- ✓ **Impact:** Serves 5,000+ daily commuters, improving transport efficiency.
- ✓ **Government Fit:** Aligns with GSRDC's smart city vision and tourism infrastructure needs.
- ✓ **Global Standards:** Backed by global technology partnerships for superior quality.

OUR PROJECTS

PROPOSED PROJECT FOR GROWING INDIAN MARKETS

POLYCARBONATE BUBBLE DOME / BUBBLE HOUSE / ADVENTURE HOUSE / GLAMPING TENT FOR HOTEL, GARDEN RESTAURANT AND TOURISM PLACES



PTPPL reimagines luxury stays with DAPP Dura solid polycarbonate bubble domes and glamping tents, blending nature with modern design for hotels, garden restaurants, and tourism gems like Rann Utsav, Statue of Unity, and Jaisalmer and many more. Crafted with advanced technologies and a Japanese/Chinese-inspired aesthetic, these transparent havens offer eco-friendly adventure. Our innovative solution elevates Gujarat's tourism and hospitality landscape.

Benefits

- ✓ **Luxury Experience:** Transparent solid polycarbonate sheets provide stunning views, enhancing guest immersion.
- ✓ **Durability:** Resists extreme weather, ensuring year-round usability in adventurous terrains.
- ✓ **Sustainability:** Eco-friendly materials support green tourism initiatives.
- ✓ **Safety:** UV-resistant and impact-proof design protects occupants.
- ✓ **Versatility:** Ideal for hotels, garden restaurants, and sites like Rann Utsav or Jaisalmer.
- ✓ **Cost-Effective:** Modular construction reduces setup and maintenance costs.

Key Highlights

- ✓ **Innovation:** Solid polycarbonate sheets deliver clarity, strength, and weather resistance.
- ✓ **Impact:** Attracts 5,000+ tourists annually, boosting local tourism revenue.
- ✓ **Government Fit:** Aligns with Gujarat Tourism Ministry's vision for sustainable adventure hubs.
- ✓ **Global Quality:** Supported by global technology partnerships for premium craftsmanship.

POLYCARBONATE CAR PORT / PARKING SHED / EV CAR CHARGING STATION



PTPPL envisions revolutionizing urban, Industrial & Tourism Infrastructure with Polycarbonate Car Port/Parking Shed/EV Car Charging Station designed and crafted by DAPP Dura Series Polycarbonate Sheets. These Sleek, Durable Shelters crafted with advanced technologies and a Japanese/Chinese Touch, offers weather-resistant parking and sustainable charging for Electric Vehicles Designed for India's Smart Cities, Tourism hubs, Commercial Complexes, Corporate offices, Industrial Estates, Our Innovative Solution supports India's Green Mobility Goals.

Benefits

- ✓ **Sustainability:** Promotes EV adoption with integrated charging stations, reducing carbon emissions.
- ✓ **Durability:** Solid PC sheets withstand harsh weather, ensuring long-term performance with minimal maintenance.
- ✓ **Aesthetic Appeal:** Transparent, sleek design enhances urban and tourism landscapes, ideal for high-traffic sites.
- ✓ **Cost-Efficiency:** Lightweight materials and modular design reduce installation costs and timelines.
- ✓ **Versatility:** Suitable for smart cities, tourism destinations, commercial complexes, and residential areas.

Key Highlights

- ✓ **Innovation:** Solid polycarbonate sheets deliver superior strength, clarity, and UV resistance for premium shelters.
- ✓ **Impact:** Supports 1,000+ EVs annually, fostering sustainable urban mobility.
- ✓ **Government Fit:** Aligns with Gujarat's smart city initiatives and Tourism Ministry's eco-friendly goals.
- ✓ **Global Standards:** Leverages global technology partnerships with Kunyan and Unique for world-class quality.

OUR PROJECTS

PROPOSED PROJECT FOR GROWING INDIAN MARKETS

MOUNTAIN CORRIDOR / MOUNTAIN CLIMBING TUNNEL / MOUNTAIN WALK WAYS



PTPPL transforms India's religious hills with DAPP Dura Series polycarbonate Mountain corridors, climbing tunnels, and walking shelters, enhancing pilgrim safety at Pavagadh, Chotila, Ambaji, and beyond. Crafted with advanced technologies and a durable design, these structures offer weather protection and accessibility. Our innovative solution supports spiritual journeys while aligning with India's tourism and heritage preservation goals.

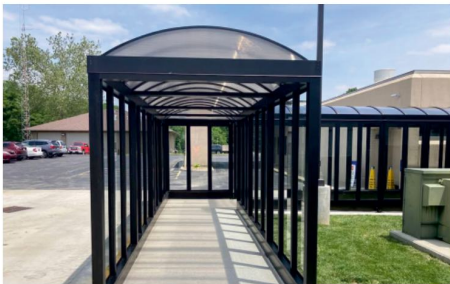
Benefits

- ✓ **Safety:** Solid polycarbonate sheets provide sturdy protection against falls and weather hazards.
- ✓ **Durability:** Resists harsh mountain climates for long-term use.
- ✓ **Accessibility:** Facilitates easy navigation for pilgrims of all ages on steep terrains.
- ✓ **Sustainability:** Eco-friendly materials support green pilgrimage initiatives.
- ✓ **Aesthetic Appeal:** Transparent design complements sacred landscapes.
- ✓ **Comfort:** Sheltered walkways offer respite during long treks.

Key Highlights

- ✓ **Innovation:** Solid polycarbonate sheets ensure strength, clarity, and weather resistance.
- ✓ **Impact:** Serves 50,000+ annual pilgrims, enhancing spiritual access.
- ✓ **Government Fit:** Aligns with India's Tourism Ministry and temple trust goals for safe pilgrimages.
- ✓ **Global Quality:** Backed by global technology partnerships for superior craftsmanship.

SHED FOR RELIGIOUS HILLS TEMPLES / WALK WAYS / WALKING SHELTER



PTPPL enhances public spaces across India with DAPP Dura Series walking shelters, waiting queue lines, and canopies, designed for religious temples, government offices, and more. Crafted with advanced technologies and a durable, transparent design, these structures offer weather protection and accessibility. Our innovative solution supports pilgrim comfort and efficient public services nationwide.

Benefits

- ✓ **Comfort:** Provides shade and shelter for waiting queues and walkways.
- ✓ **Durability:** Solid polycarbonate sheets withstand harsh weather conditions.
- ✓ **Safety:** UV-resistant design protects users from sun exposure.
- ✓ **Aesthetic Appeal:** Transparent, sleek look enhances temple and office settings.
- ✓ **Sustainability:** Eco-friendly materials align with green initiatives.
- ✓ **Accessibility:** Spacious design accommodates large crowds easily.

Key Highlights

- ✓ **Innovation:** Solid polycarbonate sheets ensure strength, clarity, and weather resistance.
- ✓ **Impact:** Serves 100,000+ annual visitors, improving public experience.
- ✓ **Government Fit:** Meets India's Tourism Ministry and office infrastructure needs.
- ✓ **Global Quality:** Backed by global technology partnerships for excellence.

OUR PROJECTS

PROPOSED PROJECT FOR GROWING INDIAN MARKETS

ROOFING SOLUTION & SKYLIGHT FOR METRO STATION, RAILWAY STATION, BUS TERMINALS & INDUSTRIAL FACTORIES



PTPPL redefines India's transit hubs with DAPP Dura Series polycarbonate canopies and skylights for metro stations, railway stations, bus terminals, and industrial/public areas. Built with advanced technologies and a durable, transparent design, these solutions enhance safety and aesthetics. Our innovative structures support India's infrastructure growth, aligning with government and industrial needs nationwide.

Benefits

- ✓ **Durability:** Solid polycarbonate sheets withstand extreme weather and heavy traffic.
- ✓ **Safety:** UV-resistant and impact-proof for passenger protection.
- ✓ **Natural Light:** Skylights reduce energy costs with bright, eco-friendly illumination.
- ✓ **Aesthetic Appeal:** Sleek, transparent design elevates station and industrial zones.
- ✓ **Sustainability:** Eco-friendly materials support green infrastructure goals.
- ✓ **Low Maintenance:** Reduces upkeep costs for busy public spaces.

Key Highlights

- ✓ **Innovation:** Solid polycarbonate sheets offer strength, clarity, and weather resistance.
- ✓ **Impact:** Serves millions of commuters, boosting transit efficiency.
- ✓ **Government Fit:** Meets Indian Railways and urban development standards.
- ✓ **Global Quality:** Supported by global technology partnerships for excellence.

OTHER SOLUTIONS

CONSTRUCTION & ARCHITECTURE INDUSTRY

- ✓ Industrial Roofing & Siding Solution
 - Industrial Glazing Roofing Solution (Skylight)
 - Entrance Canopies at Building Front
- ✓ Skylights in PPGI Sheet Roofing
- ✓ Glazing & Architectural Projects
- ✓ Sports Facilities (Stadium, Aranas, Swimming Pool Enclosures)
- ✓ Educational Institution (Canopies, Skylight, Walkways)

APPLICATIONS FOR HOTEL / CLUBS / HOSPITALITY INDUSTRIES

- ✓ Swimming Pool Screen Enclosure
- ✓ Entrance Canopies at Hotel Building Front
- ✓ Guest Parking Shed & Car Ports

RELIGIOUS & ADVENTUROUS PLACE

- ✓ Decorative Shed at Temples for Sitting & Resting

SIGNAGE & DISPLAY, LED BACKLIGHT SIGNAGE

HOME DÉCOR & OUTDOOR LIVING

- ✓ Residential Roofing (Patio Cover), Siding & Garden Sheds
- ✓ Door & Window Awning
- ✓ Canopies & Outdoor living spaces
- ✓ Interior Cladding & Liners
- ✓ Facades & Curtain Walls

AGRICULTURE INDUSTRIES

- ✓ Green House Covering
- ✓ Animal Confinement Cover & Cladding
- ✓ Agricultural Infrastructure Solutions includes Irrigation Sheds & Storage Solutions.
- ✓ Poultry Sheds





Panthor Turnkey Projects Pvt. Ltd.



S 227, Silver Cube, Opp. Bansari Township, Mehsana – 384002.



dapp_solution@panthorturnkey.com
panthorturnkeyprojects@yahoo.com



+91 96876 45645

Scan to Visit Website

